



1400JF & 1400JFL

Aerating Fountain

1/4HP, 120V, Single Phase



Includes all 5 Patterns

Patterns (Upper L to R)

Osprey—3.5'H x 7'W

Falcon—4'H x 4'W

Condor—4'H x 4'W inner, 2'H x 10'W outer

Patterns (Lower L to R)

Eagle's Nest—3.5'H x 10'W

Hawk's Nest—3'H x 7'W

Quick Facts

- ⇒ Complete Package is Fully Assembled and includes Motor Unit, Power Control Panel, UV Resistant High Density Thermoplastic Float, Two 15' Braided Nylon Mooring Lines, SJTOW Rated 3 Wire Power Cable, and 5 Glass Filled Thermoplastic Deflector Nozzles (LED Light Ring with 50' Cord is Standard on 1400JFL Models)
- ⇒ Operates in 12" (30.5cm) of Water
- ⇒ Total Component Listed by ETL to meet UL and CSA Standards for Safety in Water
- ⇒ Series 300 Austenitic & 18-8 Stainless Steel Construction of Exposed Metal
- ⇒ 1 Year Warranty
- ⇒ UPS Shippable
- ⇒ Made in the USA
- ⇒ LED Light Ring with 50' Cord and Transformer is Standard with 1400JFL Units and Optional with 1400JF Units
- ⇒ Energy Efficient with Excellent GPM/kW Rates
- ⇒ Industrial Strength Design
- ⇒ Top Intake for Shallow Water Operation
- ⇒ UV Resistant Thermoplastic Fountain Housing has Built In Screening to Keep Debris Out and Allow for Maximum Water Flow Into the Unit

Features

Motor Unit

- ⇒ 1/4HP, 240V, Single Phase
- ⇒ 1750 RPM Motor
- ⇒ Oil Cooled
- ⇒ Continuous Duty Rated Motor
- ⇒ Double Bearing
- ⇒ Thermal Overload Protection
- ⇒ Fully Unitized Heavy Duty Elastomer Bellows Mechanical Seal
- ⇒ Series 300 Austenitic Stainless Steel Motor Can with Engineering Grade Thermoplastic Top

Control Panel

- ⇒ U.L. Listed per N.E.C.
- ⇒ 15 Amp Class A Human Rated GFCI Breaker
- ⇒ Photo Cell for Light Kit
- ⇒ NEMA Type 3R Weatherproof Enclosure
- ⇒ 24 Hour Mechanical Timer

Fountain Components

- ⇒ UV Resistant 4 Blade Engineered Thermoplastic Propeller with All Blades on the Same Plane
- ⇒ UV Resistant Thermoplastic Fountain Housing
- ⇒ All 5 Deflector Nozzles Included with 18-8 Stainless Hardware
- ⇒ UV Resistant Thermoplastic Deflectors
- ⇒ Less than 5 Minute Nozzle Change/Replacement

Float

- ⇒ U.V. Resistant High Density Thermoplastic
- ⇒ Single Piece Float
- ⇒ 18-8 Stainless Steel Hardware
- ⇒ Two 15' Braided Nylon Mooring Ropes

Power Cable

- ⇒ SJTOW UL, CSA, and NEC Approved Underwater Rated Cable
- ⇒ 3 Wire (2 Hot and 1 Ground)
- ⇒ 50', 16 Gauge Power Cable

Optional Lights

- ⇒ LED Light Ring
- ⇒ 50' SJTOW UL, CSA, and NEC Approved Underwater Rated Cable
- ⇒ Built In Low Voltage Transformer
- ⇒ ETL Approved

Kasco 1400JF & 1400JFL Specifications

Model #	HP	Cord Length	Cord Gauge	Voltage/Phase/Hz	Running Amps	Lock Rotor Amps	Lights Included	Sugg. Pond Size (S.A.)*	Min. Depth of Operation	Shipping Weight	Number of Boxes
1400JF050	1/4	50'	16	120/1/60	3.1	9	No	Up to 1/5	12"	34 Lbs.	1
1400JFL050	1/4	50'	16	120/1/60	3.1	9	Yes	Up to 1/5	12"	35 Lbs.	1

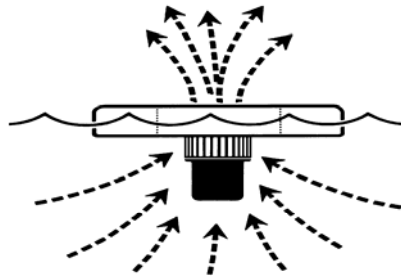
* Surface acreage (SA) is determined by multiplying length x width of the pond. The actual shape, depth, and oxygen demand should be considered when selecting a unit size.

Kasco Optional Lighting Package Specifications

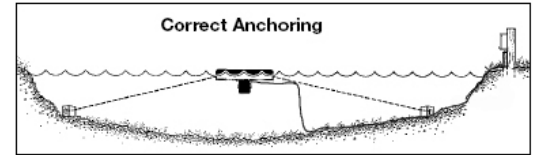
Model #	Cord Length	Number of Fixtures	Voltage/Phase/Hz	Wattage Per Fixture	Total Wattage	Lens Position	Shipping Weight	Number of Boxes
L140	50'	1	12/1/60	12	12	Above Water	5 Lbs.	1

Operation

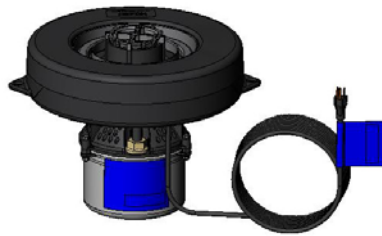
- ⇒ Submersed motor with top intake draws water into the fountain housing and pushes the water past the deflector nozzle and into the air.
- ⇒ Individual water droplets absorb oxygen from the atmosphere and return to the body of water transferring oxygen from the air and into the water.
- ⇒ Moving water mixes and agitates the water, spreading oxygenated water throughout the body of water.
- ⇒ Single propeller and deflector nozzle design allows for greater water flow with a lower likelihood of clogging.
- ⇒ UV resistant thermoplastic fountain housing screen shall catch large debris and assist in reducing the likelihood of clogging.



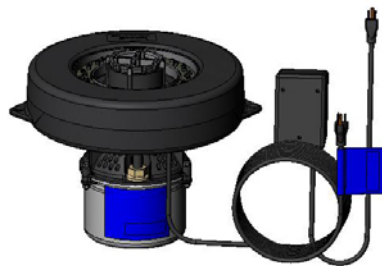
During unit operation, water is circulated from 360° around the unit as well as from below. Top intake for shallow water operation.



Assembly and Installation of Kasco equipment is quick and easy. Each unit includes an Owners Manual with specific steps to assemble, install, and operate the equipment properly.



1400JF Without Lights



1400JFL With Lights

The motor unit attaches to the float using stainless steel hardware for a secure assembly. The single section, U.V. resistant, high density thermoplastic float allows for excellent durability with an attractive shape and low visibility. The rigid polypropylene fountain housing helps protect the unit from debris and reduce the likelihood of clogging.



Each unit includes a UL Approved Control Panel complete with Class A Human Rated GFCI Protection, 24 Hour Mechanical Timer, and Photo Eye for Optional Light Kit. NEMA Type 3R weatherproof enclosure.



The Optional Lighting Package easily mounts to the float and can be purchased and added at any time. ETL approved.

Kasco Marine, Inc.
800 Deere Rd.
Prescott, WI 54021

Ph: (715) 262-4488 * Fax: (715) 262-4487
www.KascoMarine.com * www.GotAlgae.com
Sales@KascoMarine.com



Rev. 10/24/06